



Brightwater

# PROJECT REPORT

## SMP Project

Oceana Gold, Macreas Flat, Otago, New Zealand  
2007



Ore concentrate repulping and processing plant

TURNKEY SOLUTION PROVIDERS TO INDUSTRY

CONCEPT



DESIGN



MANUFACTURE



INSTALL



COMMISSION



OPERATE



## The Situation

Oceana Gold constructed a gold processing plant to extract ore concentrate at the Globe Progress Mine, in Reefton. This plant was due to be commissioned and in production in the first quarter of 2007. The ore concentrate was to be transported by road/rail/road to be further processed at the Macraes Flat Processing Plant.

Oceana Gold contracted GRD Minproc to design and procure the plant and equipment. Brightwater were awarded the contract to manufacture and supply platework fabrications for this plant.

## The Solution

The concentrate is delivered to the plant into a receival facility after which it is repulped and transferred to a stack treatment tank for chemical dosing.

The ore concentrate is then processed in a fine grinding mill and then transferred to a stock holding tank for processing in the existing extraction plant.

Brightwater's scope of work was to install the structural, mechanical and pipework equipment. Also included was the site joining and building of the partially fabricated tanks.

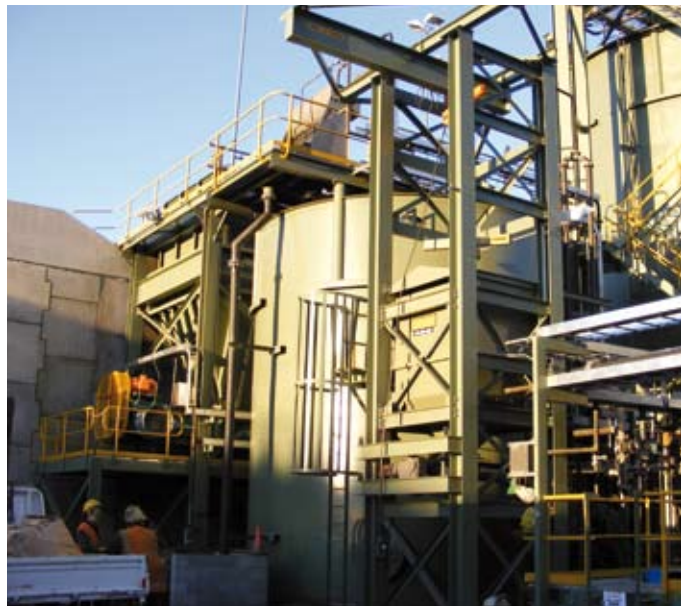
This was a fast track project with many supply issues, all of which posed difficulties to meet the completion date.

## Key Features

- SMP (Structural, Mechanical & Piping) installation project.
- High profile project to integrate new facility on existing site.
- Project manage client nominated equipment supply from several sources.
- Working with client appointed EPC contractors.



Concentrate receival hopper being loaded



Chemical dosing system and storage tank



**Brightwater**

### New Zealand Head Office

Address 7 Spencer Place  
PO Box 43, Brightwater  
Nelson 7022, New Zealand

Telephone +64 3 543 5300  
Facsimile +64 3 543 5301  
Email [inquiries@brightwater.co.nz](mailto:inquiries@brightwater.co.nz)  
Web [www.brightwater.co.nz](http://www.brightwater.co.nz)

### New Zealand Branches

Auckland Christchurch

### Australian Branches

Perth Melbourne Brisbane  
Email [inquiries@brightwater.net.au](mailto:inquiries@brightwater.net.au)  
Web [www.brightwater.net.au](http://www.brightwater.net.au)

verification



ISO9001  
Certified

PR04172008/04